

# NEW HOLLAND

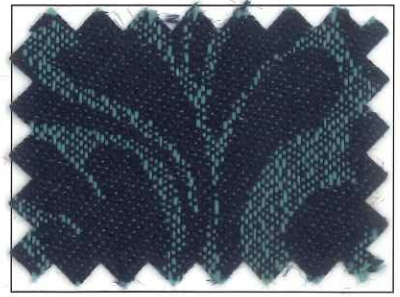
Church Furniture

"Setting the Industry Standard"™

## LIAISON



Azalea



Yacht Club



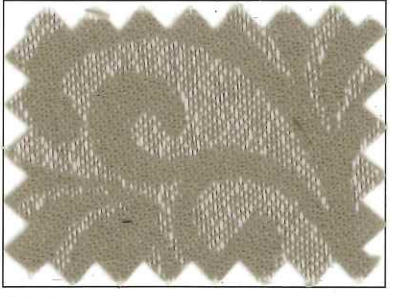
Black Gold



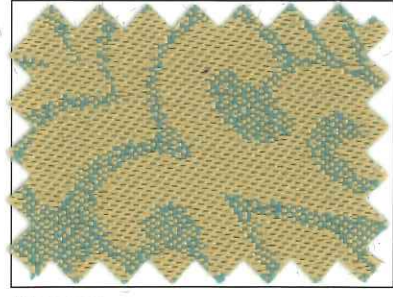
Golden Age



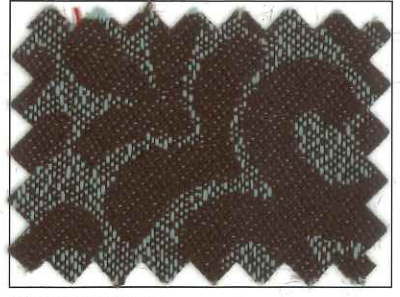
Heirloom



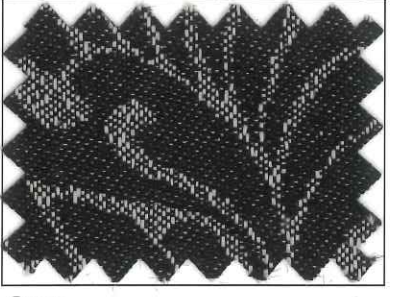
Linen



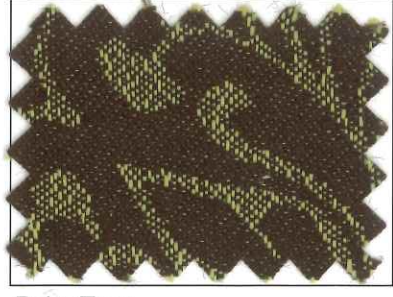
Nassau



Northampton



Onyx



Palm Tree



Regal Blue

\* Covered by a 10 year limited performance warranty

# NEW HOLLAND

## Church Furniture

"Setting the Industry Standard"™

313 Prospect Street, PO Box 217  
New Holland, PA 17557-0217  
(800)648-9663



A CENTURY OF  
CRAFTSMANSHIP

<b>Pattern Name</b>	<b>Liaison</b>	Shown Railroaded	
<b>Fiber Content</b>	100% Polyester		
<b>Actual Weight</b>	11.5 ounces per linear yard	355 grams per linear meter	
<b>Standard Width</b>	54" (137-140 cm)	<b>Warranty</b>	10 Year Warranty
<b>Finish</b>	Acrylic with SR Dip (Additional performance finishes are available)		
<b>Repeat Size</b>	7" Horizontal 6-7/16" Vertical	17.8 cm Horizontal	16.4 cm Vertical
<b>Test Cleaning Code</b>	WS - For water based stains, use mild detergent foam or upholstery shampoo. For oil based stains, spot clean with a dry cleaning solvent being sure to test area first.		

**Flame Resistance - Meets requirements of the following fire codes:**



California Technical Bulletin 117-2013, Section 1, NFPA  
260 Cover Fabric (BLDG)



Fabrics can also be treated to other fire codes, please inquire.

Absecon Mills, Inc. warrants our fabrics from the date of invoice (see [www.absecon.com](http://www.absecon.com) for specific terms). The Fabric is warranted against complete deterioration of the Fabric's structure in a particular area, and the excessive loss of color due to exposure to light provided that the Fabric is properly installed and maintained. We offer five and ten year warranties, depending on fabric construction, and offer a Limited Lifetime Warranty for Sherpa and Shire.

**ACT Voluntary Performance Guidelines for Flammability, Wet & Dry Crocking, Colorfastness to Light, Physical Properties, and Abrasion.**

Test Description	Test	Results
Abrasion (wire screen for polyolefin) Abrasion (#10 cotton duck) Heavy Duty - 30,000 double rubs minimum Wyzenbeek method	ASTM-D-4157 ASTM-D-4157	Double Rubs 60,000 Double Rubs
Break Strength Grab Test, 50 lbs. minimum, Warp and Fill	ASTM-D-5034	W: 100 lbs. F: 100 lbs.
Seam Slippage 25 lbs. minimum, Warp and Fill	ASTM-D-4034	W: 80 lbs. F: 99 lbs.
Pilling Test Brush Method Brush Pill, Class 3 minimum	ASTM-D-3511	Class: 5
Colorfastness to Crocking Dry - Grade 4 minimum; Wet - Grade 3 minimum	AATCC 8	Wet: Class 4.5 Dry: Class 5
Colorfastness to Light Grade 4 minimum @ 40 hours	AATCC 16E	Class: 4.5 40 Hours

Slight variations in color and repeat may occur and all products are matched to commercial standards.