

UPHOLSTERY FABRIC 5*



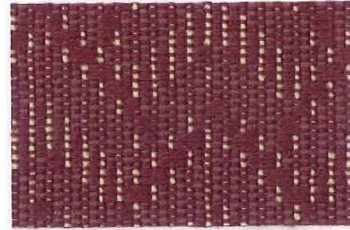
Fanfare® COLEUS



GOLDEN BEIGE



MOSS



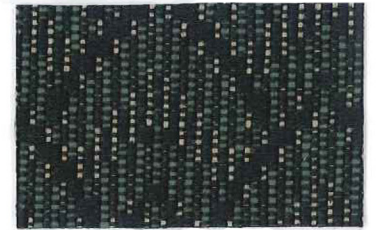
CARNATION



JUNGLE GREEN



REGAL BLUE



SMOKE PINE



Parlour® RIO RED



SMOKEY ASH



HONEY GOLD



RUSTICA



SPRING MEADOW



TRUFFLE



TUSCAN RED



JASPER



WILSHIRE BLUE



VICTORIAN PURPLE

* Covered by a 5 year limited performance warranty.

Fanfare[®] & Parlour[®]

5* Patterns are covered by a 5 year limited performance warranty. Contact your sales representative for written warranty terms and conditions.

TECHNICAL INFORMATION						A	☀	★
Pattern/ Direction	Fiber	Repeat	Backing Finish	Weight (per yard)	Cleaning Code	Abrasion ASTM 4197 (Double Rubs)	Lightfastness AATCC 16E	Seam Slippage ASTM-D-4034
Fanfare (Railroaded)	60% Polyester 40% Polyolefin	1-7/8" H 1-1/8" V	Acrylic with Teflon®	14.0 oz.	WS	40,000 (Cotton Duck)	40 hours Class 4.5	Warp - 99 lbs Fill - 76 lbs
Parlour (Shown Railroaded)	100% Polyester	3/4" H 3/4" V	Acrylic with Teflon®	10.8 oz.	WS	50,000 (Cotton Duck)	40 hours Class 5	Warp - 90 lbs Fill - 74 lbs

Cleaning Instructions: WS - For water based stains, use mild detergent foam or upholstery shampoo. For oil based stains, spot clean with a dry cleaning solvent being sure to test area first.

Flame Resistance: California Technical Bulletin 117-2013; NFPA 260

Fabrics by Absecon Mills, Inc. Fabric performance symbols indicate that a fabric performs to commercial furniture manufacturing standards and passes all applicable testing as specified by the Association for Contract Textiles (ACT).

04/2018 | For additional cards or memo samples:

email samples@absecon.com or call 1-877-356-4557



Absecon Mills is focused on being a responsible corporate entity and we are continually striving to find ways to help preserve our environment, increase energy efficiency and reduce waste. Our mode of manufacturing is specifically designed to prevent damage to the environment. Our products are woven using wind power and many are constructed with polypropylene (a by-product of gasoline manufacturing, utilizing post-industrial waste) and recycled polyester, which helps keep post-consumer waste in the material stream and out of landfills. Absecon offers finishes that use ten times less fluorocarbons than conventional finishes and are SCS Indoor Advantage Gold certified. We participate in a fabric recycling program and work hard to lessen our footprint on the environment. For more information on our green initiatives, please visit www.absecon.com



WOVEN WITH WIND POWER

Colors may vary slightly from dye lot to dye lot.

* ASTM D-4034: Seam 12mm from edge using 7 stitches per 25mm (1"), plain lock stitch and a 22 ballpoint needle.



NEW HOLLAND
Church Furniture

"Setting the Industry Standard"™

313 Prospect Street, PO Box 217
New Holland, PA 17557-0217
(717)354-4521 - Toll Free (800)648-9663
Fax (717)354-2481