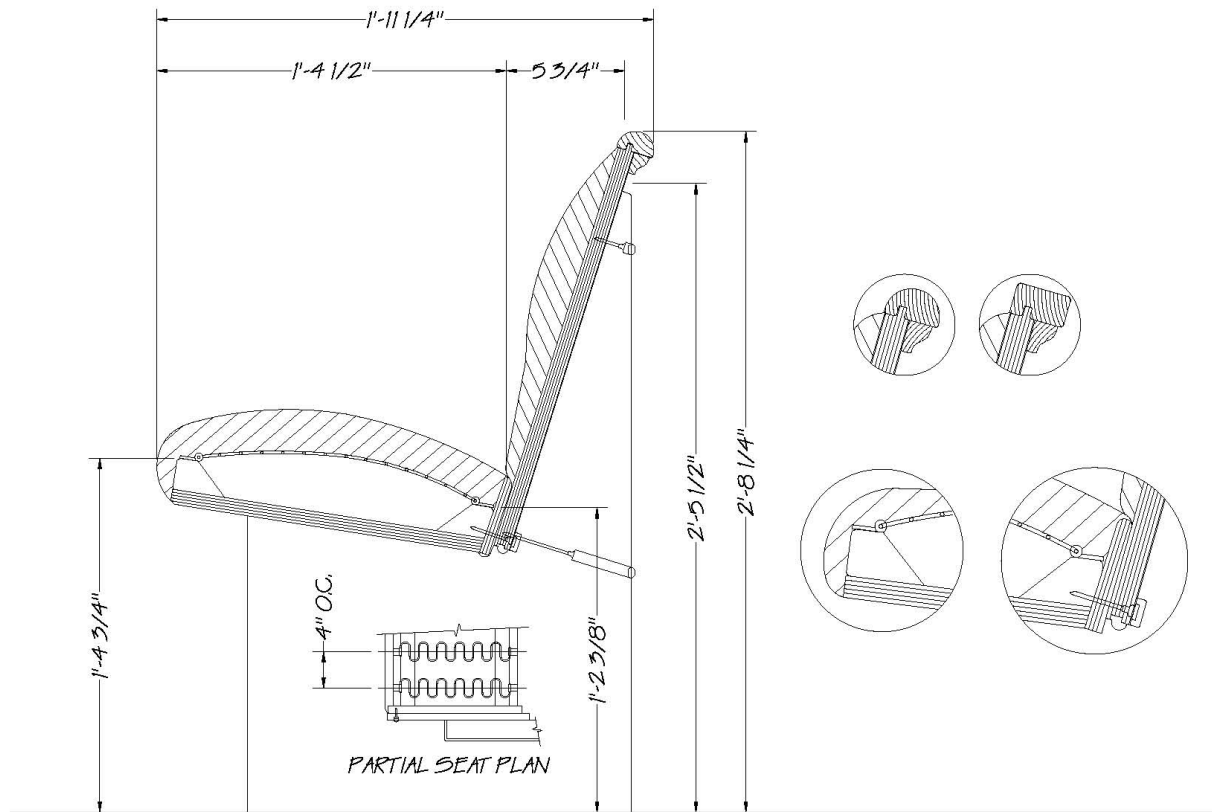


NEW HOLLAND

Church Furniture

"Setting the Industry Standard"™



SPECIFICATIONS FOR: 74-USS (SPRING SEATING SYSTEM)

SEATS:

- Upholstered spring seat.
- Construction to consist of 3/4" cabinet grade plywood seat foundation reinforced with 2x2 solid wood members running horizontally and continuously along front and back edge of seat for maximum strength and stability.
- Using a #9 wire serpentine spring system to be spaced 4" on center.
- Springs are screwed securely to horizontal wood members, and covered with 10 oz. Burlap material.
- 2" thick, 1.85 lb. density foam is applied over spring foundation.
- Upholstered with choice of fabric. Fabric is tightly stretched using even pneumatic pressure, with edges tucked, folded, and stapled to underseat.

BACKS:

- Contoured upholstered face, veneer backside, 5-ply laminated construction using 1/2" center core of cabinet grade plywood, 1/8" cross banding of 68 lb. density Lebanite hardboard both sides, laminated under heated hydraulic pressure with back face to be bookmatched selected specie veneer.
- Front of back to have contoured foam profile with 1.5 lb. density.
- Upholstered with choice of fabric. Fabric is tightly stretched using even pneumatic pressure, with edges tucked and stapled to center core.
- Finished with 5/4 solid wood cap rail with a tongue and groove joint securely fastened to back, and a solid wood undercap molding.

* W Option – 2" wider back available