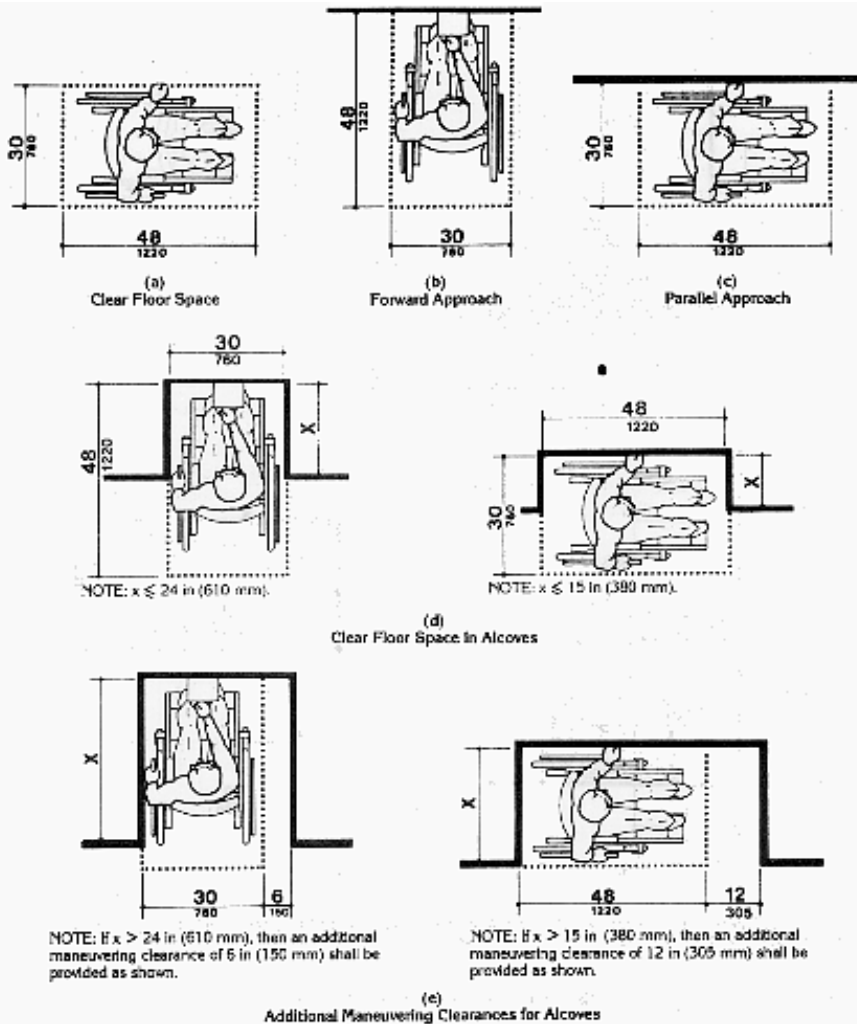


# Wheel Chair Spacing

[www.usdoj.gov/crt/ada/reg3a/fig4.htm](http://www.usdoj.gov/crt/ada/reg3a/fig4.htm)



## 4.33 Assembly Areas.

**4.33.1 Minimum Number.** Assembly and associated areas required to be accessible by 4.1 shall comply with 4.33.

**4.33.2\* Size of Wheelchair Locations.** Each wheelchair location shall provide minimum clear ground or floor spaces as shown in FIG 46.

### 4.33.3\* Placement of Wheelchair Locations.

Wheelchair areas shall be an integral part of any fixed seating plan and shall be provided so as to provide people with physical disabilities a choice of admission prices and lines of sight comparable to those for members of the general public. **They shall adjoin an accessible route**

**that also serves as a means of egress in case of emergency.** At least one companion fixed seat shall be provided next to each wheelchair seating area. **When the seating capacity exceeds 300, wheelchair spaces shall be provided in more than one location.** Readily removable seats may be installed in wheelchair spaces when the spaces are not required to accommodate wheelchair users.

**EXCEPTION:** Accessible viewing positions may be clustered for bleachers, balconies, and other areas having sight lines that require slopes of greater than 5 percent. Equivalent accessible viewing positions may be located on levels having accessible egress.

**4.33.4 Surfaces.** The ground or floor at wheelchair locations shall be level and shall comply with 4.5.

**4.33.5 Access to Performing Areas.** An accessible route shall connect wheelchair seating locations with performing areas, including stages, arena floors, dressing rooms, locker rooms, and other spaces used by performers.